

PARCEL MAP NO. 10405
FOR 1 LOT SUBDIVISION FOR CONDOMINIUM
PURPOSES-100 RESIDENTIAL CONDOMINIUMS AND 2
COMMERCIAL CONDOMINIUMS

SCALE: 1"=40'

FEB. 2017

CITY OF OAKLAND, ALAMEDA COUNTY, STATE OF CALIFORNIA

BEING A RESUBDIVISION OF LOTS 12-25, BLOCK 36, OF THE KELLERBERGER'S TRACT OF THE
CITY OF OAKLAND, FILED IN BOOK 7 OF MAPS AT PAGE 3, OFFICIAL RECORDS OF ALAMEDA
COUNTY, STATE OF CALIFORNIA.



LEA & BRAZE ENGINEERING, INC.

CIVIL ENGINEERS • LAND SURVEYORS

2495 INDUSTRIAL PARKWAY WEST
HAYWARD, CALIFORNIA 94545
(510) 887-4086
FAX (510) 887-3019
WWW.LEABRAZE.COM

LEGEND

	BOUNDARY LINE
	PROPERTY LINE
	TIE LINE
	MONUMENT LINE
	EASEMENT LINE
	UNDERGROUND MINERAL RIGHTS RESERVED LINE
	FOUND MONUMENT AS NOTED
	SET NAIL & BRASS TAG LS 7623
	INDICATES RECORD DATA
	STANDARD CITY MONUMENT
	IN MONUMENT BOX, STAMPED
	"L.S. 7623" TO BE SET PER
	PM 10404
	UNDERGROUND MINERAL RIGHTS RESERVED BY SERIES NO. 85-192873
	UNDERGROUND MINERAL RIGHTS RESERVED BY SERIES NO. 89-87774

BASIS OF BEARINGS

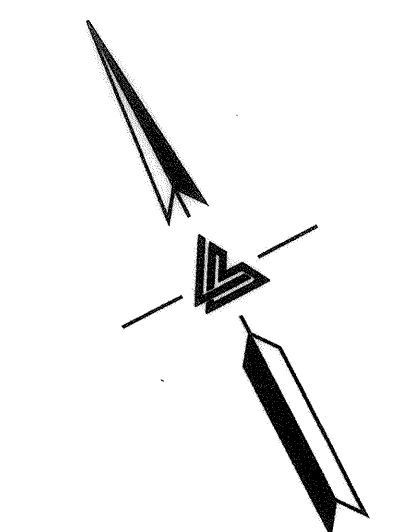
THE BEARING SOUTH 62°35'04" EAST BETWEEN FOUND MONUMENT ON 4TH STREET AS SHOWN ON RECORD OF SURVEY NO. 1658, FILED IN BOOK 25 OF RECORDS OF SURVEY AT PAGE 48, ALAMEDA COUNTY RECORDS, WAS USED AS THE BASIS OF ALL BEARINGS SHOWN UPON THIS MAP.

NOTES

- 1) ALL DISTANCES AND DIMENSIONS ARE IN FEET AND DECIMALS OF A FOOT.
- 2) ALL INTERIOR LOT LINES WITHIN PARCEL 1 ARE TO BE REMOVED BY THIS MAP
- 3) UNDERGROUND MINERAL RIGHTS ARE RESERVED WITHIN A PORTION OF PARCEL THREE AS PER DEED RECORDED SEPT. 18, 1985 SERIES NO. 85-192873, ALAMEDA COUNTY RECORDS. THE RIGHT HOLDER THEREIN IS NOT REQUIRED TO BE SIGNATORY TO THE APPROVAL OF THIS MAP IN ACCORDANCE WITH SECTION 66436 (a) (C) OF THE SUBDIVISION MAP ACT. (SEE HATCHED AREA HEREON).
- 4) UNDERGROUND MINERAL RIGHTS ARE RESERVED WITHIN A PORTION OF PARCEL THREE AS PER DEED RECORDED MARCH 30, 1989 SERIES NO. 89-87774 ALAMEDA COUNTY RECORDS. THE RIGHT HOLDER THEREIN IS NOT REQUIRED TO BE SIGNATORY TO THE APPROVAL OF THIS MAP IN ACCORDANCE WITH SECTION 66436 (a) (C) OF THE SUBDIVISION MAP ACT. (SEE HATCHED AREA HEREON).
- 5) THERE EXISTS A BLANKET GRANT OF EASEMENT AFFECTING THE PROPERTY WITHIN THE BOUNDS OF THIS MAP IN FAVOR OF COMCAST OF CALIFORNIA/COLORADO, LLC, RECORDED JANUARY 18, 2017, SERIES NO. 2017-013651, ALAMEDA COUNTY RECORDS.

REFERENCES

- ① ROS 1658, Bk. 25 Pg. 48
- ② RECORD PER "KELLERBERGER'S MAP OF OAKLAND", Bk. 7 of Maps, Pg. 3
- ③ PM 6400, Bk. 208, Pg. 67
- ④ RECORD PER CITY OF OAKLAND MONUMENT MAP NO. 184
- ⑤ RECORD PER DEED DOCUMENT NO. 2016-083187
- ⑥ PER PM 10404

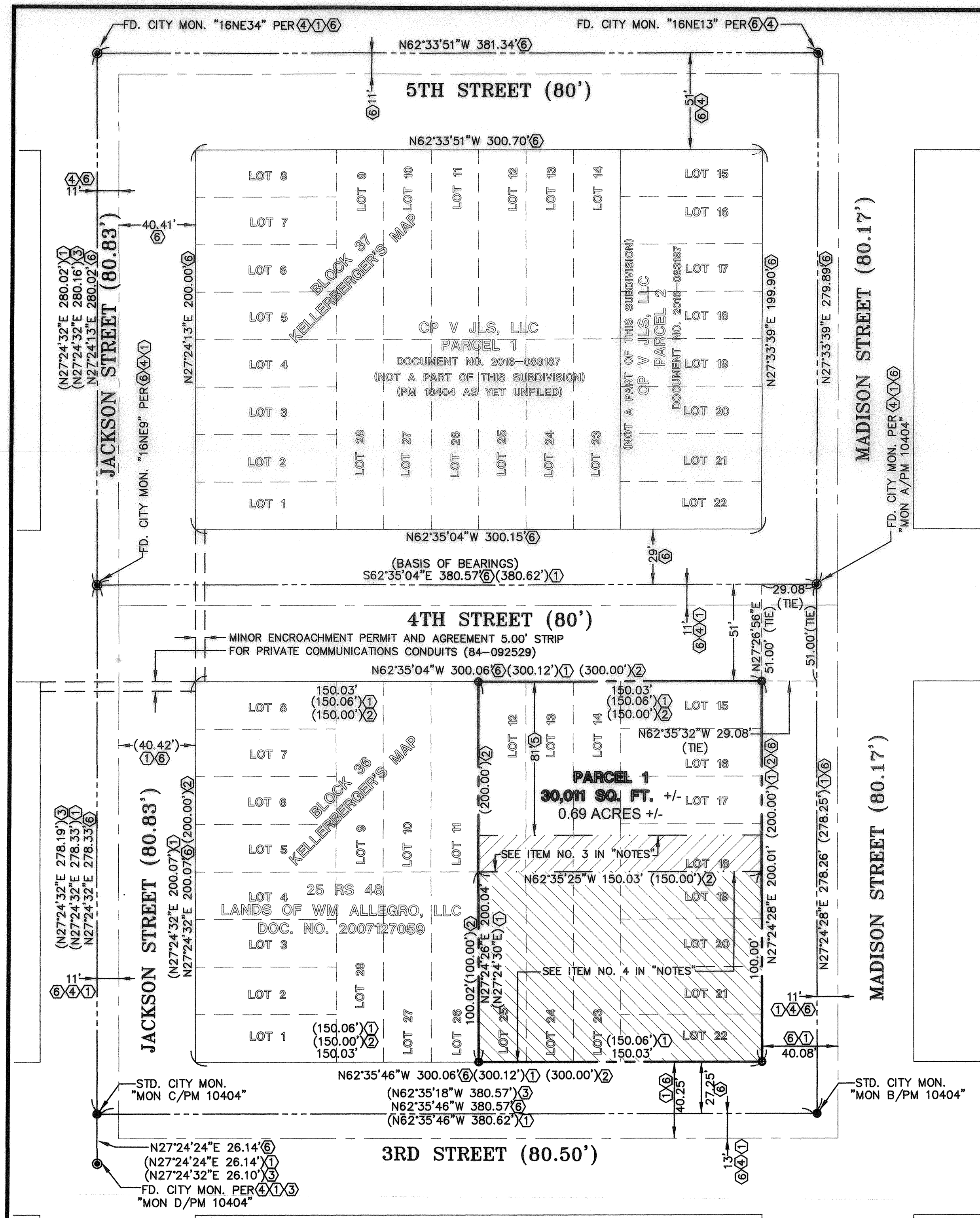


0 20 40 80

SCALE: 1" = 40'

JOB NO. 2150206CI/2150197SU

SHEET 2 OF 2



Parcel Map 10405

Map OK 334

Pg. 95