

SCALE: 1"=20'
ACREAGE: 0.795 ACRES
NO. LOTS: 29

KRYSTAL VILLA UNIT NO. 4

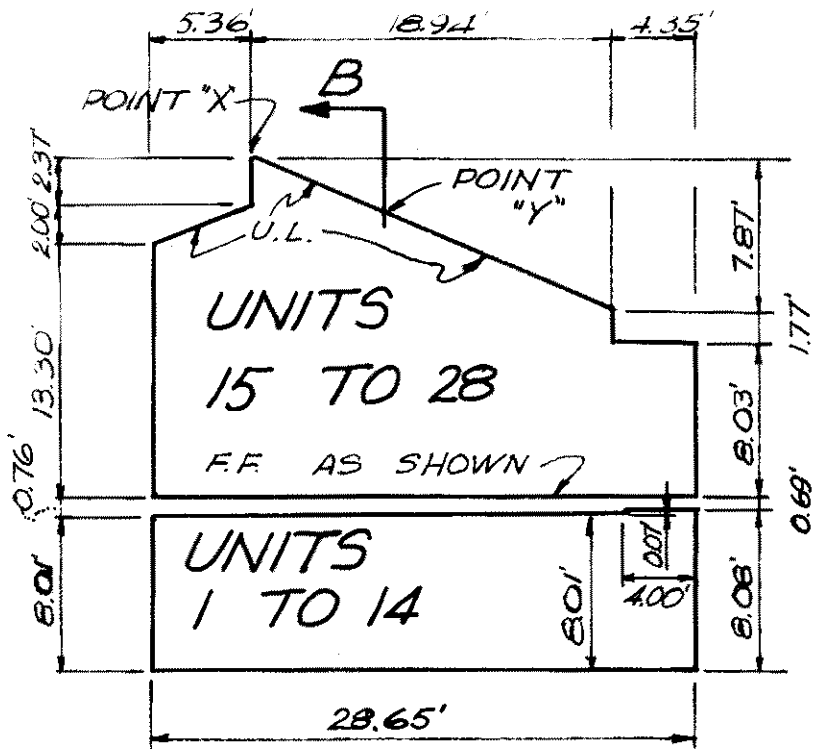
SHEET 4 OF 4 SHEETS

IN THE UNINCORPORATED TERRITORY OF MONO COUNTY, CALIFORNIA

E.T. CONRAD, RCE 14794
JANUARY, 1970
FOR CONDOMINIUM PURPOSES

NOTE: REFER TO SHEETS # 2
NOTES

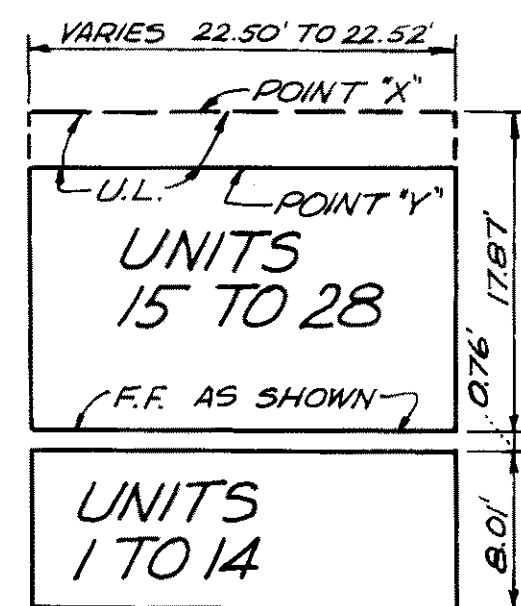
LOWER PORTION IS A
TYPICAL SECTION OF
EACH OF UNITS 1
THROUGH 14, INCLUSIVE.
UPPER PORTION IS A
TYPICAL SECTION OF
EACH OF UNITS 15
THROUGH 28, INCLUSIVE



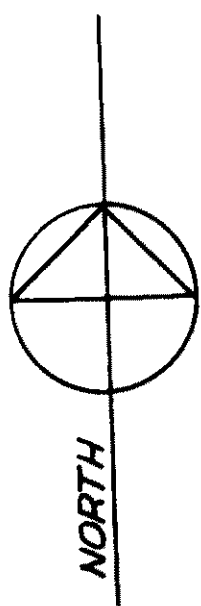
TYPICAL SECTION A-A

NO SCALE

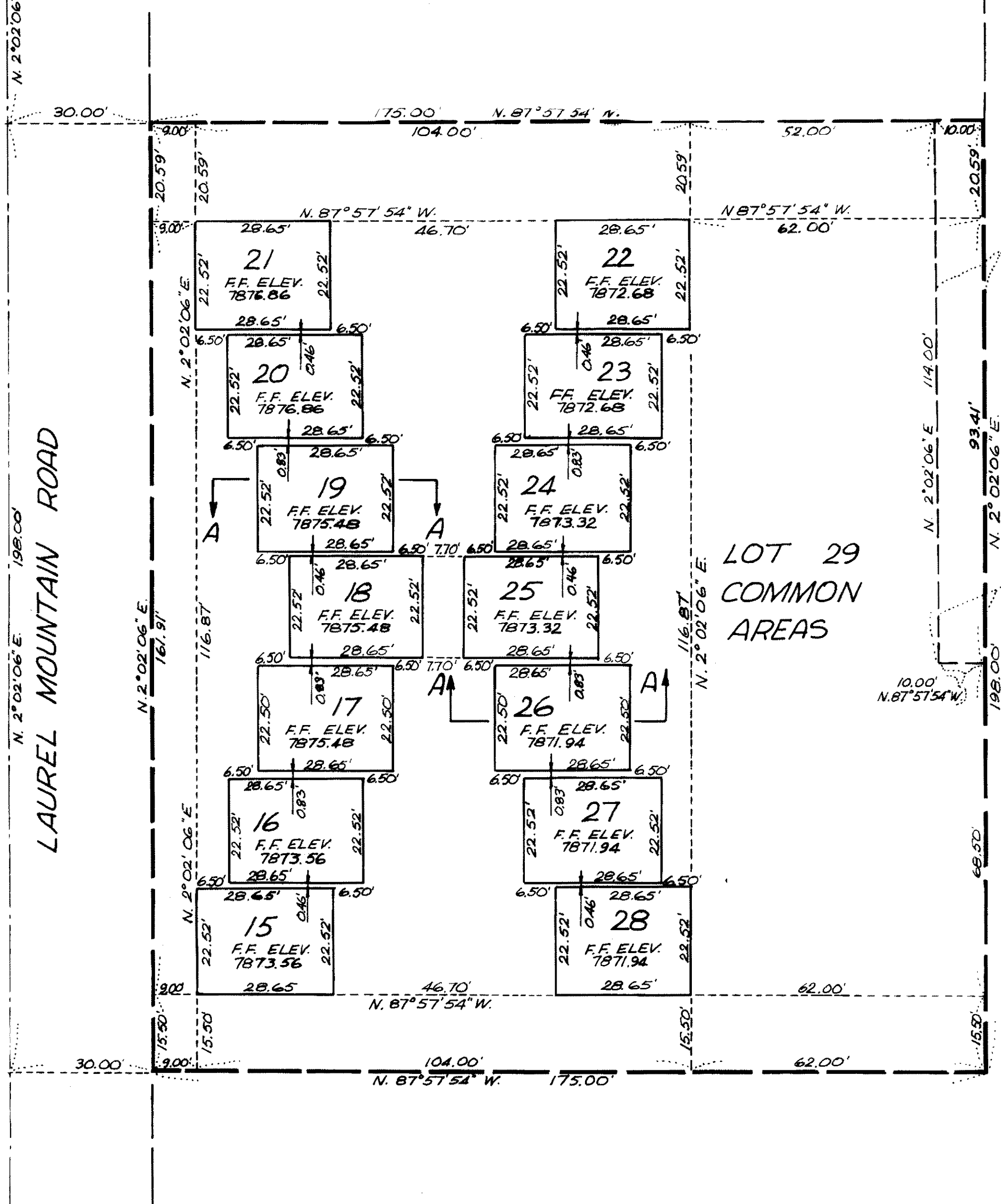
B



TYPICAL
SECTION B-B
NO SCALE



LAUREL MOUNTAIN ROAD



EXISTING 10' SANITARY SEWER
EASEMENT, MAMMOTH COUNTY
WATER DISTRICT

LOT 29
COMMON
AREAS

28.7-18.9C.