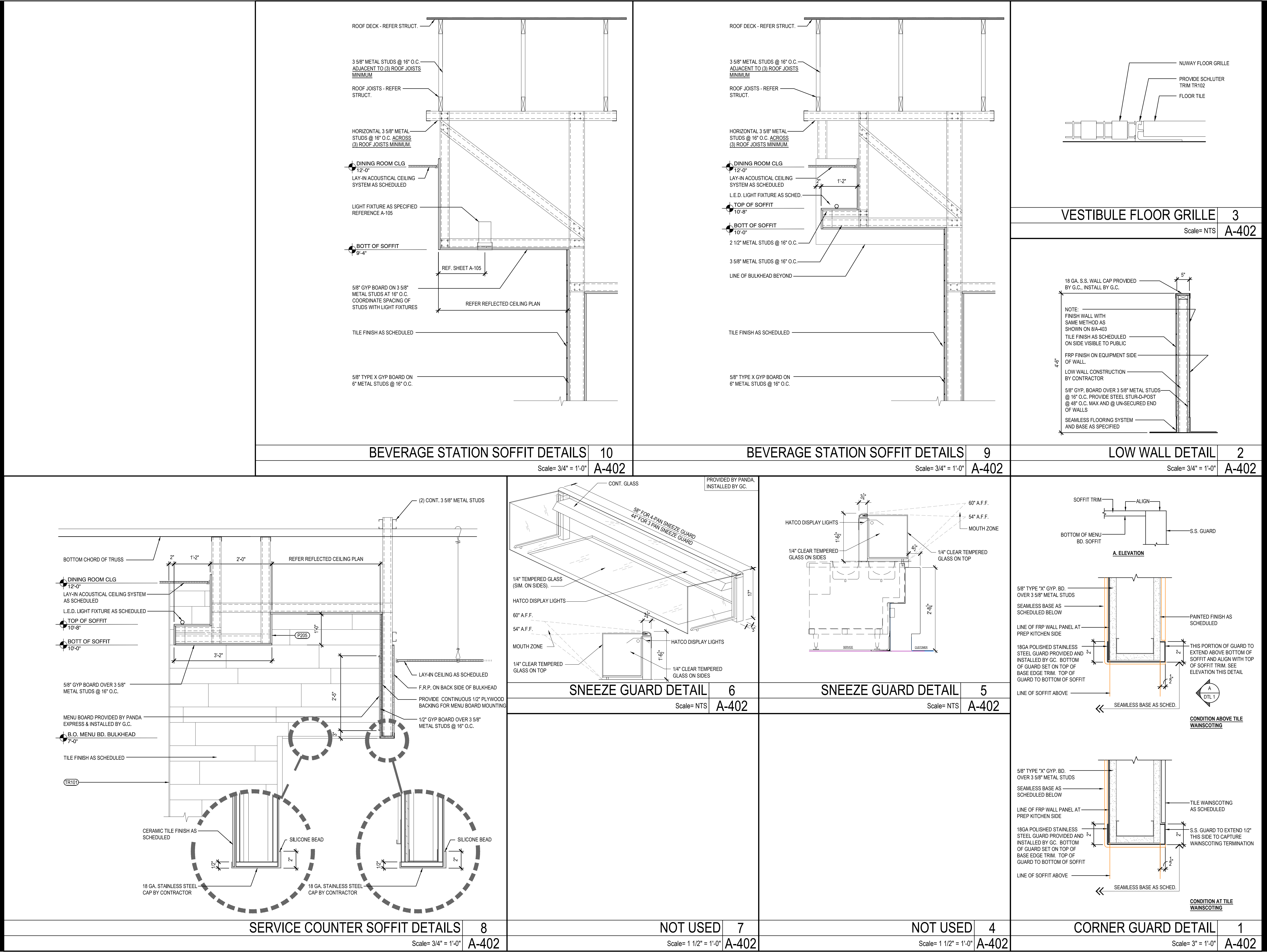


D:\Chicago-Jobs\Panda\IN\S8-21-D8044 - IN, Greenfield, State St & New Rd\3-A&E\2-CDs\CAD\A-402\_Architectural Details-2300\_True Warm and Welcome.dwg, 5/6/2021 1:44:52 PM, AutoCAD PDF (General Documentation).pc3



PANDA EXPRESS, INC.  
1683 Walnut Grove Ave.  
Rosemead, California  
91770  
Telephone: 626.799.9898  
Facsimile: 626.372.8288

All ideas, designs, arrangement and plans indicated or represented by this drawing are the property of Panda Express Inc. and were created for use on this specific project. None of these ideas, designs, arrangements or plans may be used by or disclosed to any person, firm, or corporation without the written permission of Panda Express Inc.

REVISIONS:	
ISSUE DATE:	
04/27/21	WALMART REVIEW
05/05/21	ISSUE FOR PERMIT

DRAWN BY: BL

PANDA PROJECT #: S8-22-D8044  
PANDA STORE #: D8044  
ARCH PROJECT #: Q511070001



**NEWGROUND**  
15450 S OUTER FORTY DRIVE, SUITE 300  
CHESTERFIELD, MO 63017  
636-898-8100

**PANDA EXPRESS**  
TRUE WARM & WELCOME  
N STATE ROAD 9  
GREENFIELD, IN 46140

**A-402**  
ARCHITECTURAL DETAILS  
TRUE WARM & WELCOME 2300 R5