



PANDA EXPRESS, INC.
1683 Walnut Grove Ave.
Rosemead, California
91770
Telephone: 626.799.9898
Facsimile: 626.372.8288

All ideas, designs, arrangement and plans indicated or represented by this drawing are the property of Panda Express Inc. and were created for use on this specific project. None of these ideas, designs, arrangements or plans may be used by or disclosed to any person, firm, or corporation without the written permission of Panda Express Inc.

REVISIONS:

| | |
|--|--|
| | |
| | |
| | |
| | |
| | |
| | |
| | |
| | |

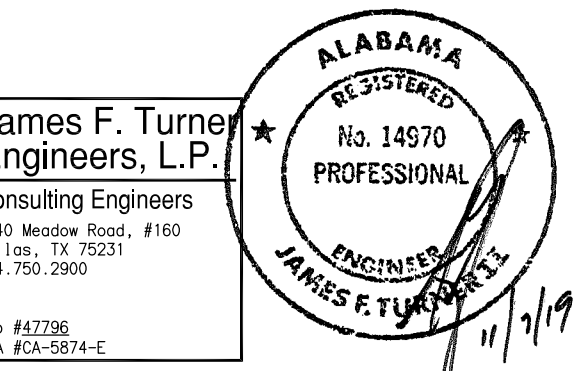
ISSUE DATE:

| | | |
|-----|---------------------|----------|
| 1st | DEVELOPER REVIEW | 07.15.19 |
| 2nd | SITE PLAN SUBMITTAL | 08.26.19 |
| 3rd | SITE COMMENTS | 09.05.19 |
| 4th | ISSUE FOR PERMIT | 10.01.19 |
| 5th | ISSUE FOR BID | 11.07.19 |

DRAWN BY: PM / KL / EA

PANDA PROJECT #: S8-20-D7163

ARCH PROJECT #: 19027



Heights Venture
ARCHITECTURE • DESIGN

HOUSTON 1111 North Loop West, Suite 800 Houston, Texas 77008 713 869 1103 V
DALLAS 5741 Legacy Drive, Suite 320 Plano, Texas 75024 972 490 7292 V

PANDA EXPRESS

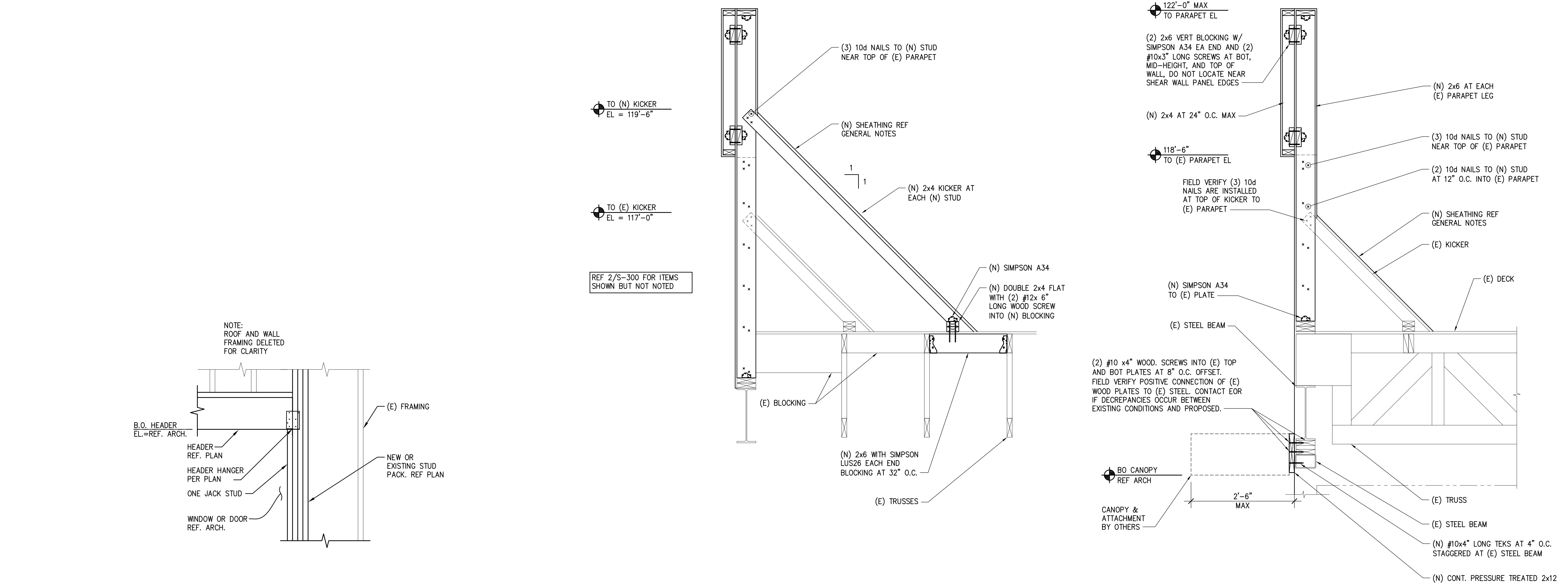
2096 INTERSTATE DR.
OPELIKA, AL, 36801
3600 FSDT
TWW REMODEL

S-300

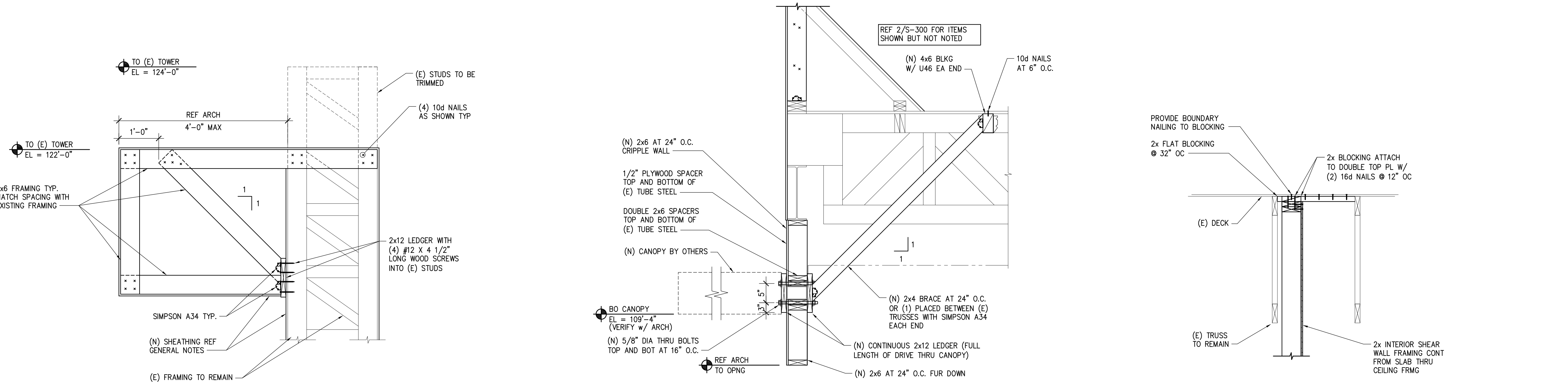
FRAMING DETAILS

TRUE WARM & WELCOME

BID ISSUE



| | | | | | |
|-----------------------------|-------|------------------------|-------|-------------------|-------|
| TYPICAL WOOD HEADER FRAMING | 6 | SECTION AT NEW KICKERS | 4 | SECTION | 2 |
| SCALE: 3/4"=1'-0" | S-300 | SCALE: 3/4"=1'-0" | S-300 | SCALE: 3/4"=1'-0" | S-300 |



| | | | | | |
|-----------------------------|-------|---------------------------|-------|------------------------------|-------|
| EXISTING TOWER MODIFICATION | 5 | SECTION AT NEW DRIVE THRU | 3 | TYPICAL SHEAR WALL ELEVATION | 1 |
| SCALE: 3/4"=1'-0" | S-300 | SCALE: 3/4"=1'-0" | S-300 | SCALE: 3/4"=1'-0" | S-300 |