

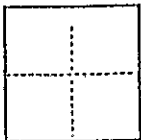
(For County Use Only)

CORNER RECORD

CR 195

COUNTY OF Alameda T. 1S. R. 3W. M.D.B.&N. MERIDIAN CALIFORNIA

CORNER TYPE: GOV'T. CORNER ☐ MEANDER ☐ RANCHO ☐ CONTROL ☐ OTHER ☒
CORNER IDENTIFICATION — DATE OF VISIT JULY 1992



Subdivision Lot corners for:
LOT 27, BLOCK E,
CLAREMONT WOODLANDS
BOOK 4 OF MAPS, PAGE 49

CORNER — LEFT AS FOUND ☐ FOUND AND TAGGED ☐ REESTABLISHED OBLITERATED CORNER ☐ REBUILT ☐

PHYSICAL DESCRIPTION OF CORNER FOUND, EVIDENCE AND METHOD USED TO IDENTIFY OR REESTABLISH

Reestablished from record data and found monuments as shown on the above named map. See sketch below for physical description of monuments found and set.

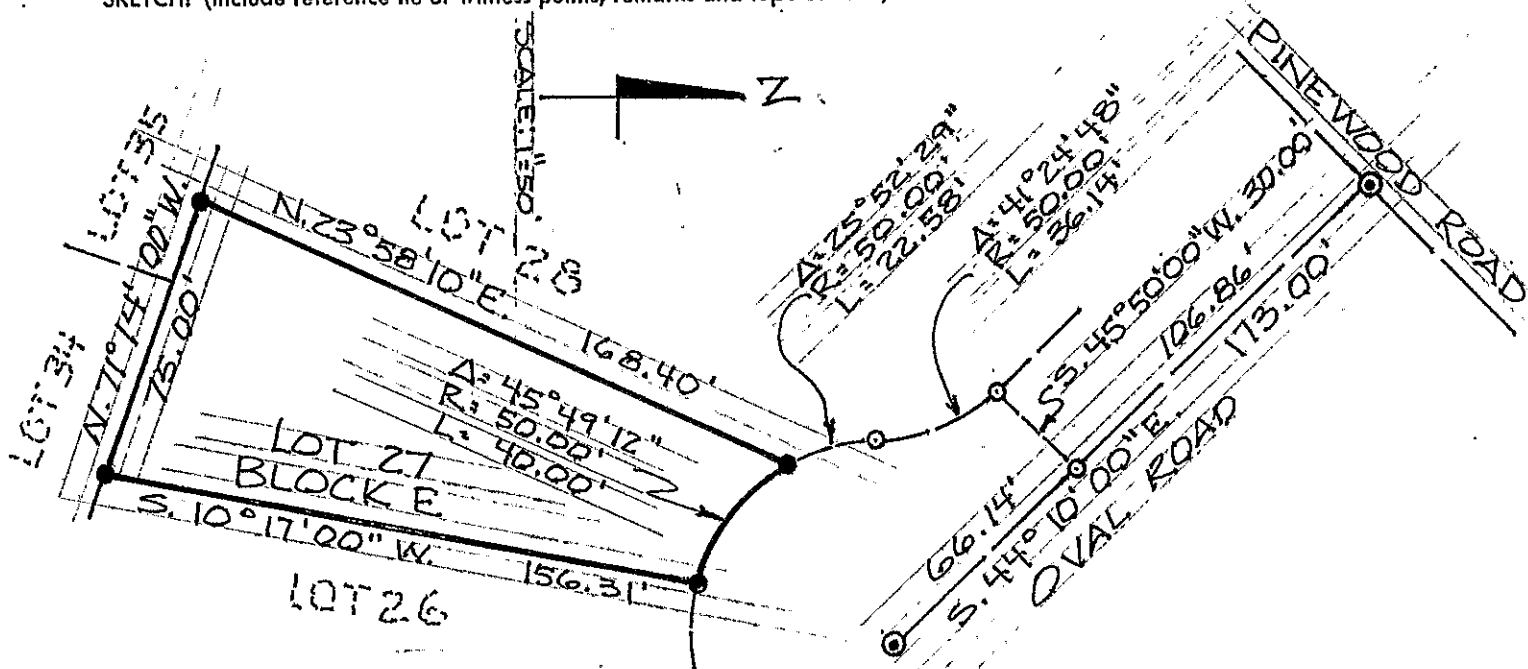
PHYSICAL DESCRIPTION OF MONUMENTS REBUILT OR PERPETUATED

- FOUND CITY OF OAKLAND MONUMENT
- SET 5/8" REBAR TAGGED R.C.E. 26930
- DIMENSION POINT NOTHING FOUND OR SET

CALIFORNIA COORDINATE SYSTEM ORDER: FIRST ☐ SECOND ☐ THIRD ☐
STATIONS USED: NGS (USC & GS) ☐ N E COUNTY ☐ A HER STATION STATION
ZONE ELEVATION NORTHINGS (Y) EASTINGS (X)

(Fold)

SKETCH: (Include reference tie or witness points, remarks and topo of area)



SURVEYOR'S CERTIFICATE

THIS CORNER RECORD WAS PREPARED BY JEFFREY B. CROWDER MY
DIRECTION IN CONFORMANCE WITH THE LAND SURVEYORS ACT
ON 1/25

SIGNED: Jeffrey B. Crowder

L.S. or R.C.E. No.: 26930

No. REC 26930
Exp. 3/31/93

COUNTY SURVEYOR'S CERTIFICATE

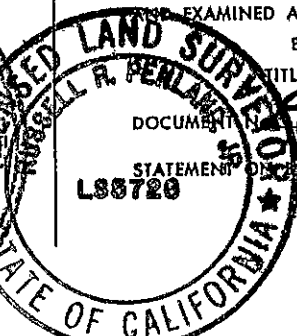
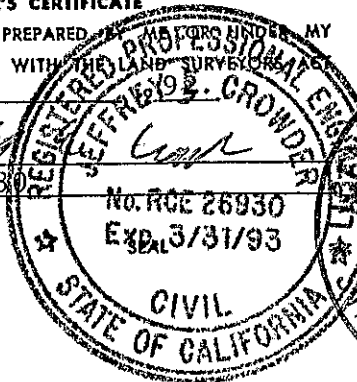
THE CORNER RECORD WAS RECEIVED 13-20 19 92
AND EXAMINED AND FILED 13-20 19 93

BY: Russell R. Perlam
TITLE: CITY OF OAKLAND SURVEY

DOCUMENT

STATEMENT OF CHECK OF SHEET

YES ☐ NO ☒



BK. 2 C.R. PG. 49