



PANDA EXPRESS, INC.
1683 Walnut Grove Ave.
Rosemead, California
91770
Telephone: 626.799.9898
Facsimile: 626.372.8288

All ideas, designs, arrangement and plans indicated or represented by this drawing are the property of Panda Express Inc. and were created for use on this specific project. None of these ideas, designs, arrangements or plans may be used by or disclosed to any person, firm, or corporation without the written permission of Panda Express Inc.

REVISIONS:		
	CIVIL REVISION LDH	12-16-2021
	DRIVE THRU UPDATE	01-14-2022

ISSUE DATE:

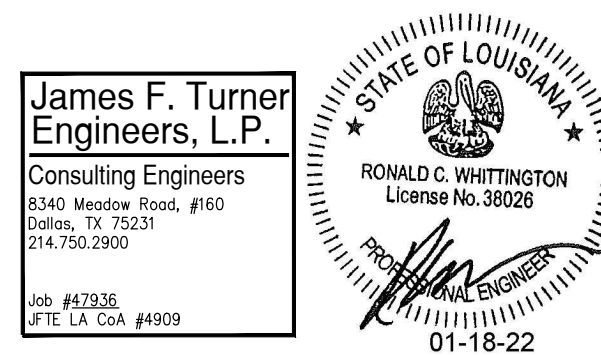
	PERMIT/BID ISSUE	09-20-2021
--	------------------	------------

DRAWN BY:

PANDA PROJECT #: S8-21-D8118

PANDA STORE #: D8118

ARCH PROJECT #: 20185



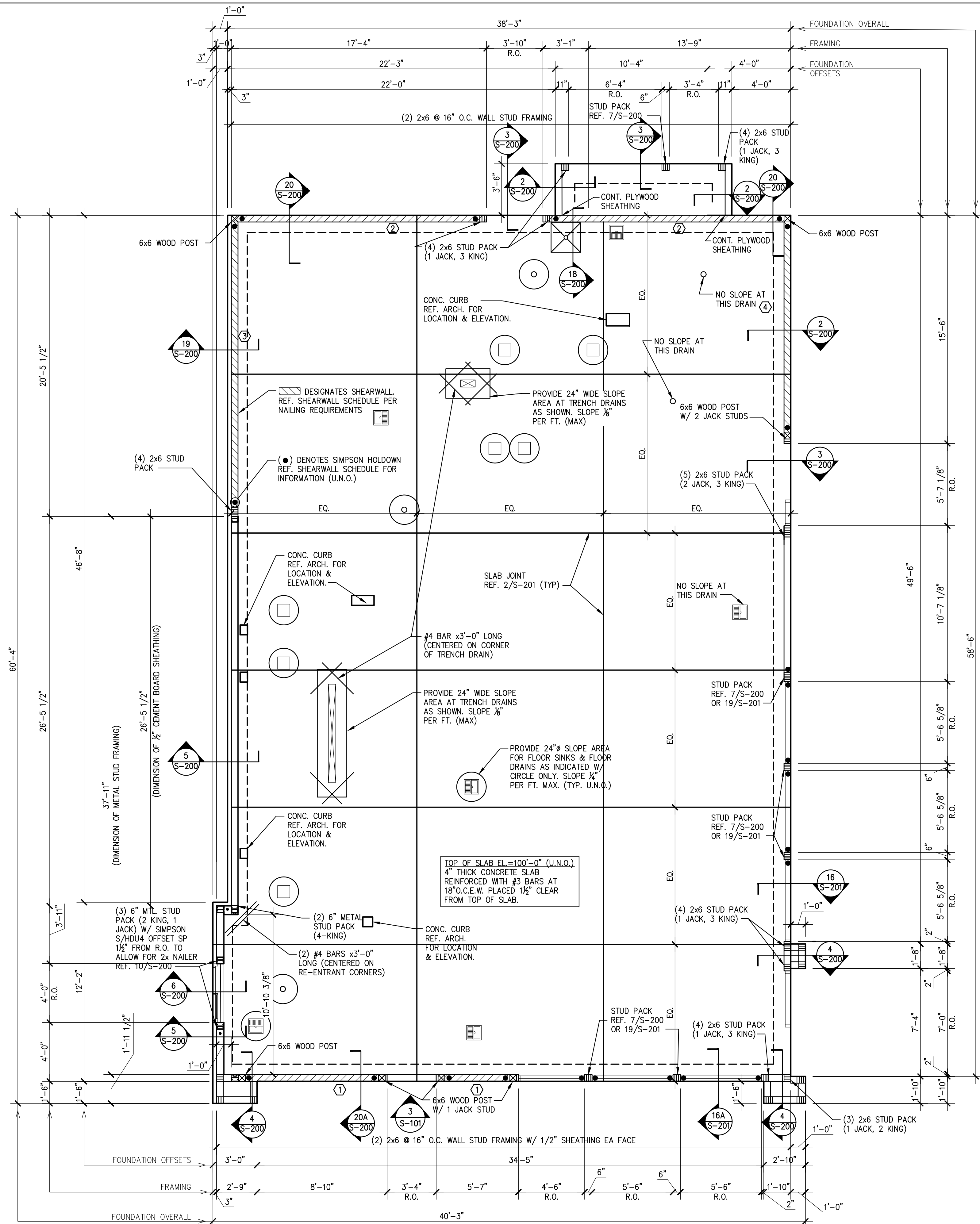
PANDA EXPRESS
TRUE WARM & WELCOME
911 N. SERVICE RD.
RUSTON, LA 71270

S-100

FOUNDATION PLAN

TRUE WARM & WELCOME 2300 R5

PERMIT/BID SET



PLAN NOTES

- REF. SHEET S-000 FOR STRUCTURAL NOTES AND SPECIAL INSPECTIONS.
- REF. 3/S-201 FOR TYPICAL PIPE AND TRENCH DETAIL AS REQUIRED.
- REF. 4/S-201 FOR TYPICAL SILL PLATE BOLT DETAIL AS REQUIRED.
- REF. 5/S-201 FOR TYPICAL STEP FOOTING DETAIL AS REQUIRED.
- REF. 6/S-201 FOR TYPICAL GRADE BEAM STIRRUP DETAIL AS REQUIRED.
- REF. 7/S-201 FOR TYPICAL REINFORCING BAR DETAIL AS REQUIRED.
- REF. 8/S-201 FOR TYPICAL CORNER BAR DETAIL AS REQUIRED.
- REF. 17/S-200 FOR TYPICAL NON BEARING WALL CONNECTION AT SLAB AS REQUIRED.
- REF. 12/S-200 AND 16/S-200 FOR TYPICAL UMBRELLA FOOTING AS REQUIRED.
- REF. 10/S-201 FOR TYPICAL TRENCH DRAIN DETAIL AS REQUIRED.
- REF. 11/S-201 FOR TYPICAL DRAIN DETAIL AS REQUIRED.
- COORDINATE WITH ARCHITECTURAL, MECHANICAL AND PLUMBING DRAWINGS FOR LOCATIONS OF ALL DEPRESSIONS, CURBS, DRAINS, ETC. IN FLOOR SLAB.

SHEARWALL SCHEDULE

TYPE	NAIL SPACING	HOLDOWN	ANCHOR BOLTS
①	10d @ 4" O.C.	HDU14-SDS2.5	3/8" @ 24" O.C.
②	10d @ 6" O.C.	HDU8-SDS2.5	3/8" @ 24" O.C.
③	10d @ 6" O.C.	HDU8-SDS2.5	3/8" @ 32" O.C.
④	10d @ 4" O.C.	HDU11-SDS2.5	3/8" @ 24" O.C.

④ - DESIGNATES SHEARWALL TYPE

NOTES:

- USE 10d COMMON NAILS.
- NAIL PANEL FACES @ 12" O.C.
- USE 1/2" PLYWOOD.
- STAGGER PLYWOOD JOINT AND SILL PLATE NAILING.
- FRAMING MEMBERS OR BLOCKING SHALL BE PROVIDED AT THE EDGES OF ALL SHEETS IN SHEARWALLS.
- REFER TO 9/S-200 FOR HOLD DOWN ANCHOR EMBEDMENT.
- HOLD DOWN ANCHORS MUST BE TIED IN PLACE PRIOR TO FOUNDATION INSPECTION.
- FRAMING AT ADJOINING PANEL EDGES SHALL BE 3 INCH NOMINAL OR THICKER AND NAILS SHALL BE STAGGERED WHERE NAILS ARE SPACED AT 3" O.C. OR ARE ON EACH FACE.

FOUNDATION NOTES

1

Scale: NO SCALE

S-100

FOUNDATION PLAN

A

Scale: 1/4"=1'-0"

S-100