

SUNSET DEVELOPMENT CO.

MORAGA DRIVE

MOJAVE AVENUE

TRACT 2098

LIVERMORE, ALAMEDA COUNTY,

CALIFORNIA

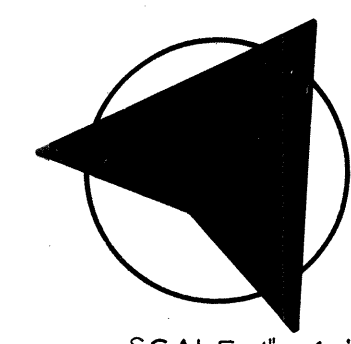
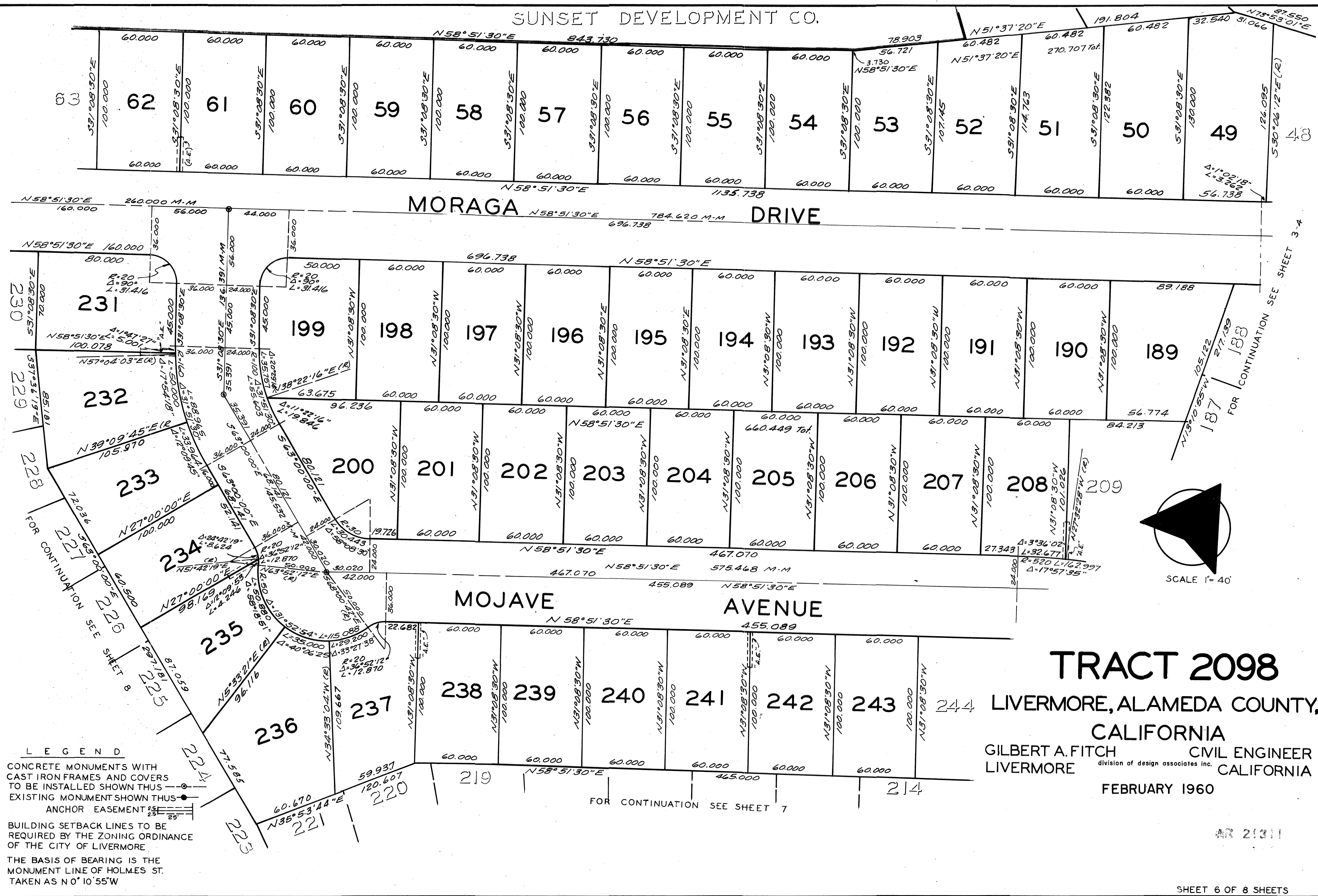
GILBERT A. FITCH CIVIL ENGINEER
LIVERMORE division of design associates inc. CALIFORNIA

FEBRUARY 1960

AR 21311

SHEET 6 OF 8 SHEETS

AR21311 FILED FEB. 24, 1960 BOOK 41 PAGES 787081 INC.



LEGEND

CONCRETE MONUMENTS WITH CAST IRON FRAMES AND COVERS TO BE INSTALLED SHOWN THUS

EXISTING MONUMENT SHOWN THUS

ANCHOR EASEMENT

BUILDING SETBACK LINES TO BE REQUIRED BY THE ZONING ORDINANCE OF THE CITY OF LIVERMORE

THE BASIS OF BEARING IS THE MONUMENT LINE OF HOLMES ST. TAKEN AS N 0° 10' 55\"

TR. 2098

FOR CONTINUATION SEE SHEET 3-4

FOR CONTINUATION SEE SHEET 8

FOR CONTINUATION SEE SHEET 7