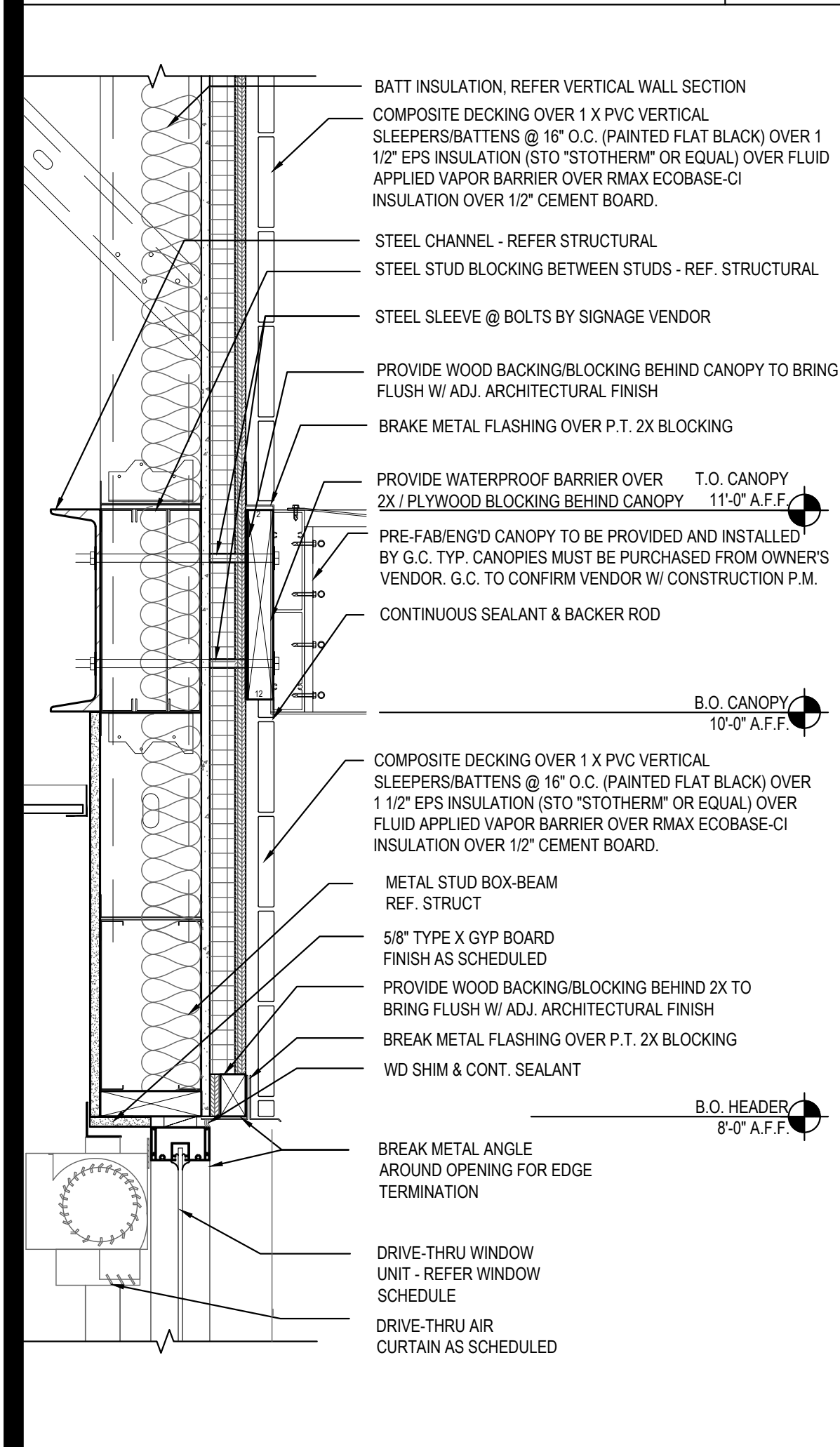


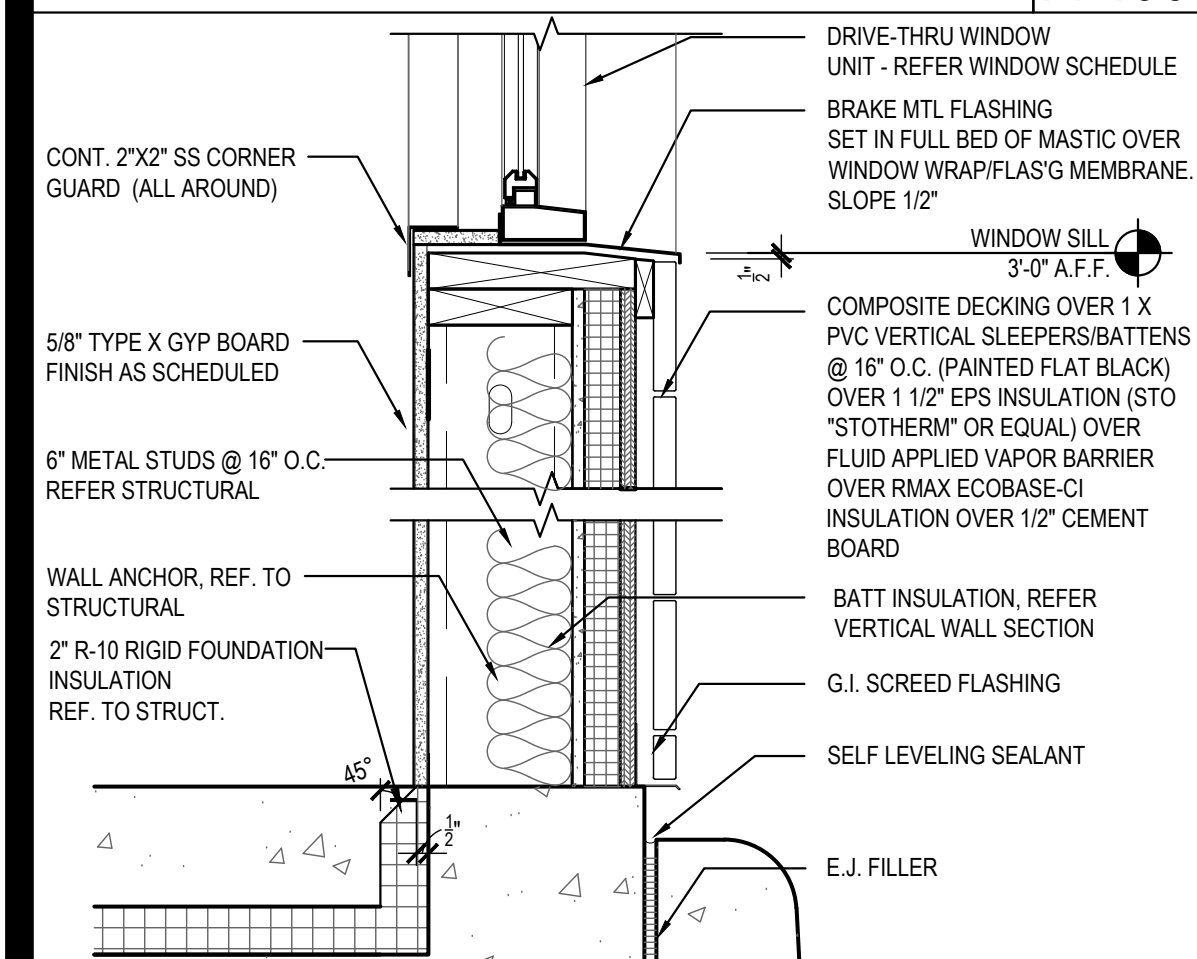
LIGHT ACCENT BAND DETAIL 16

Scale= 1 1/2" = 1'-0" A-400



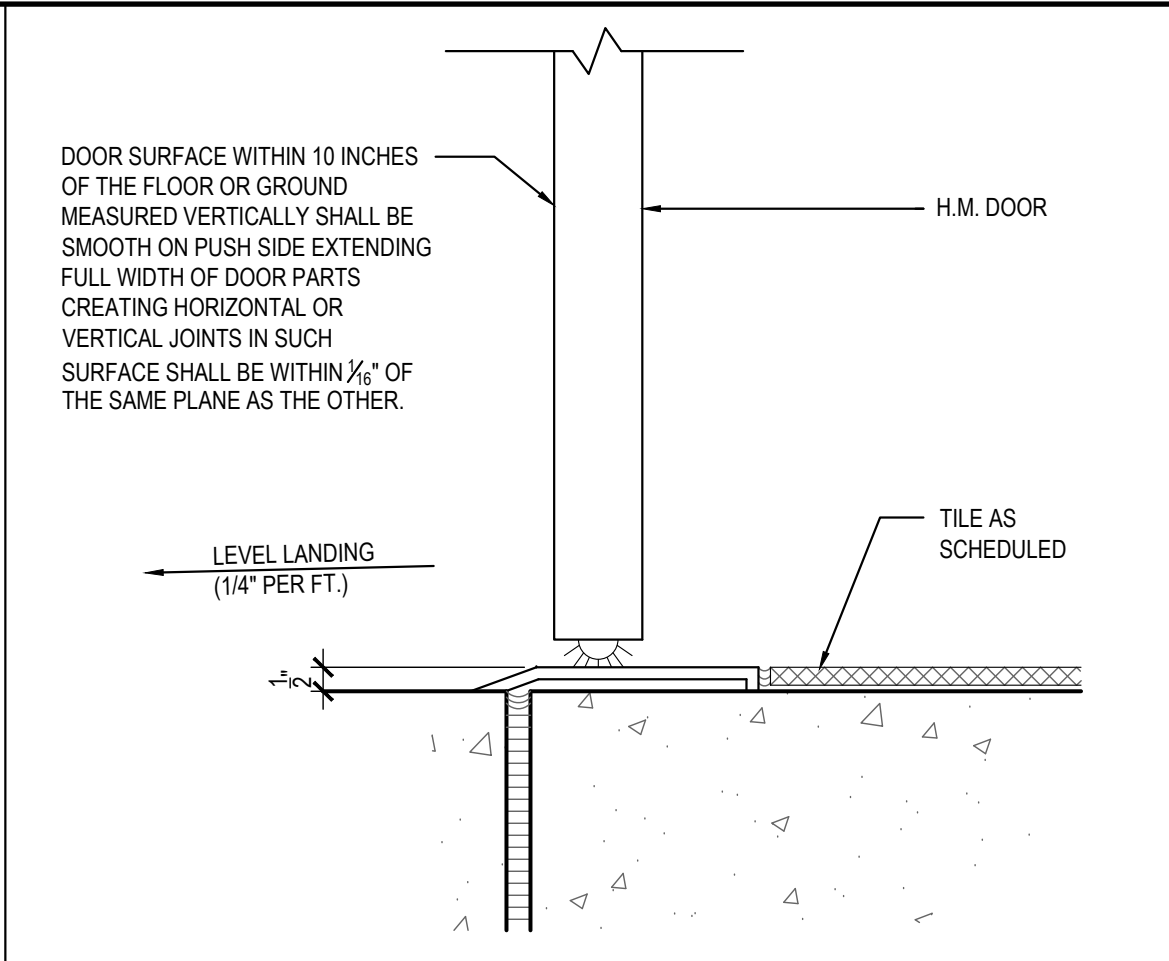
DRIVE-THRU HEAD DETAIL 15

Scale= 1 1/2" = 1'-0" A-400



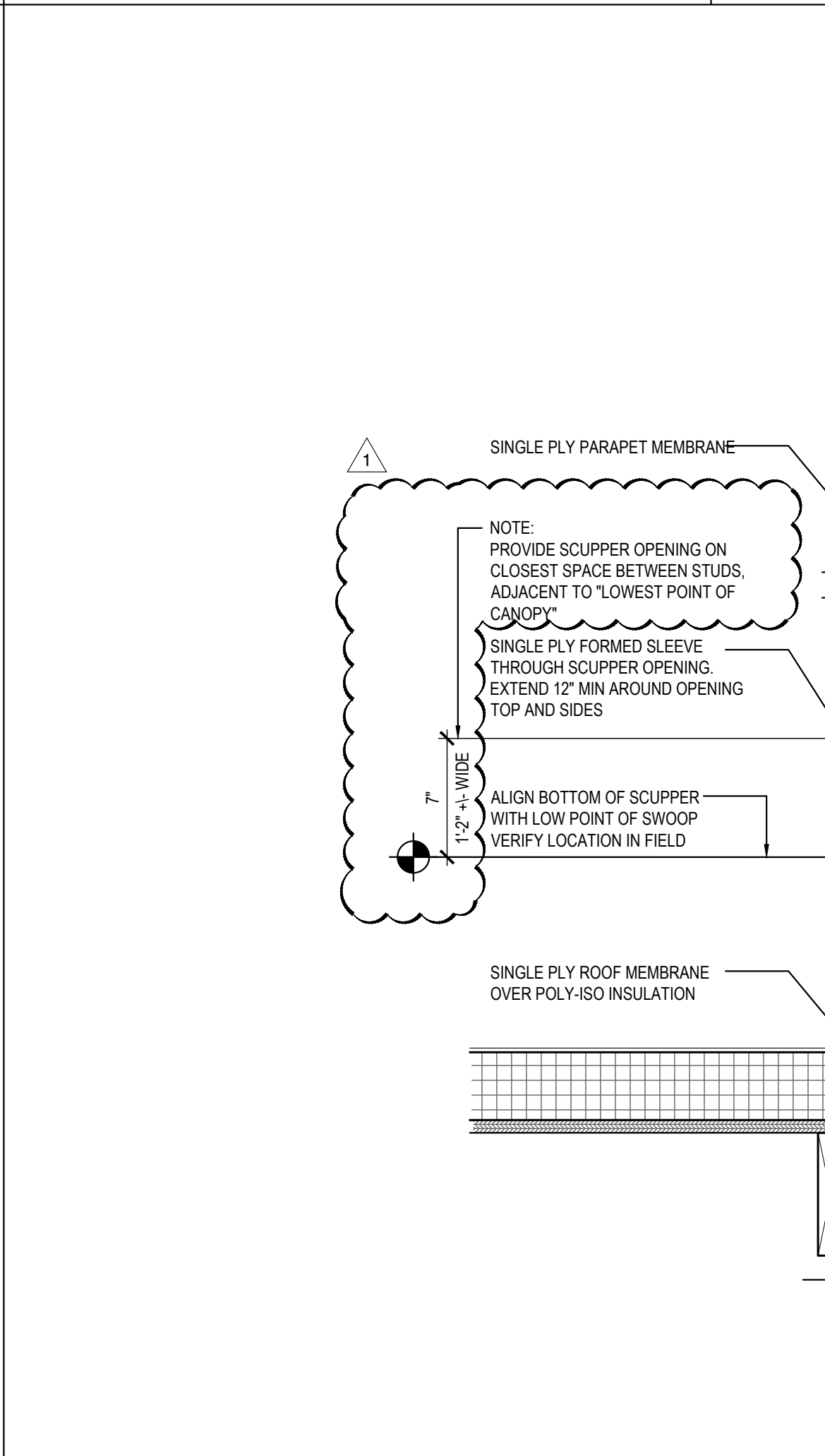
SILL DETAIL 14

Scale= 1 1/2" = 1'-0" A-400



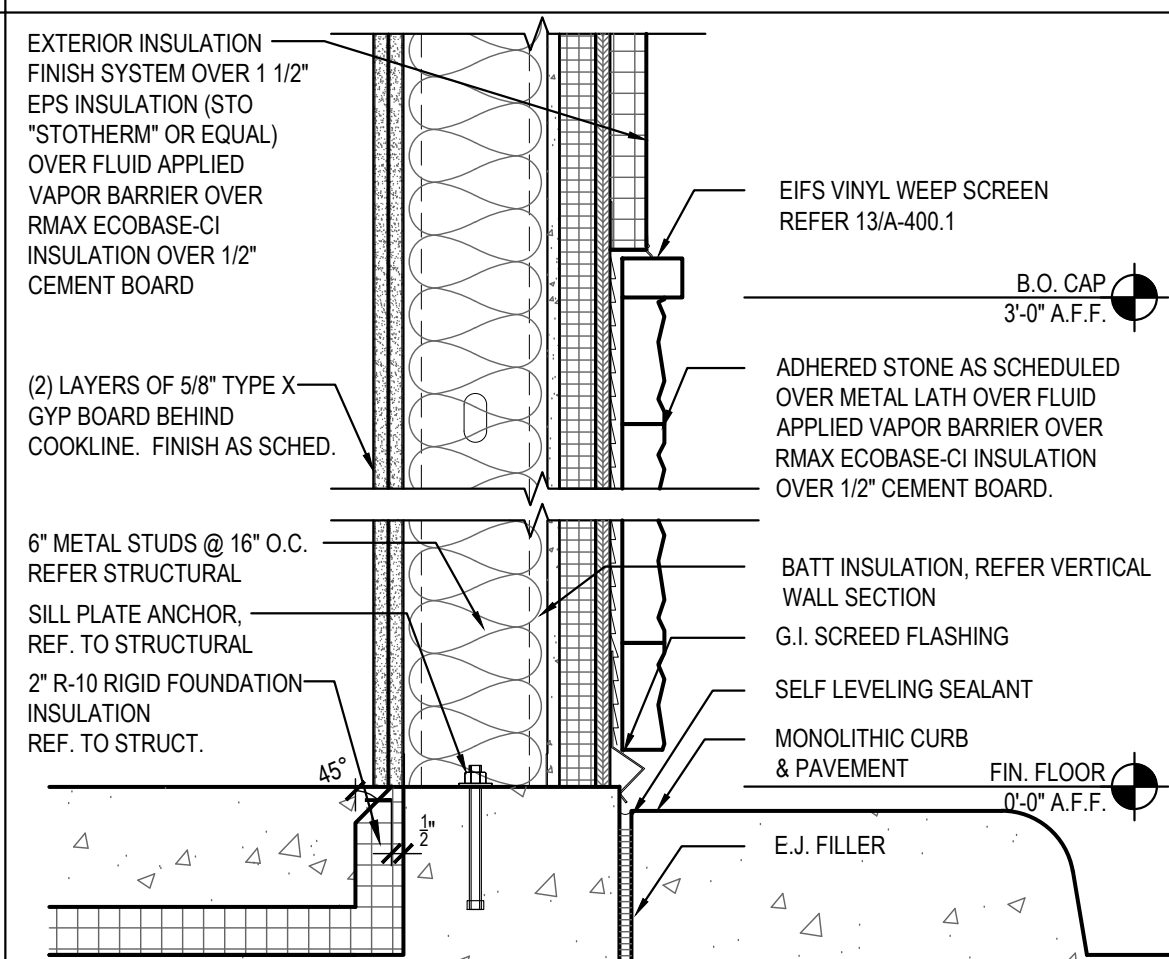
DOOR SILL DETAIL 17

Scale= 3" = 1'-0" A-400



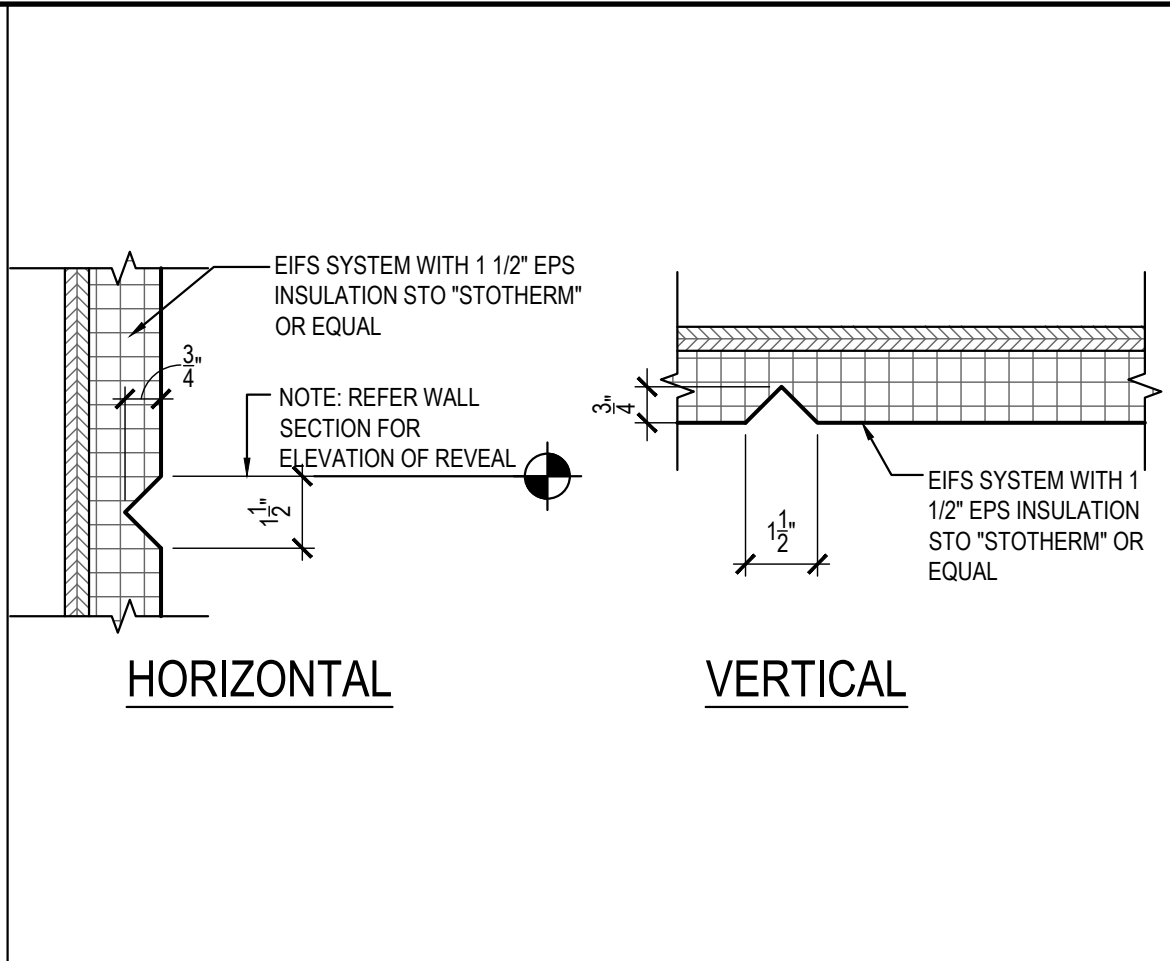
SCUPPER DETAIL 09

Scale= 1 1/2" = 1'-0" A-400



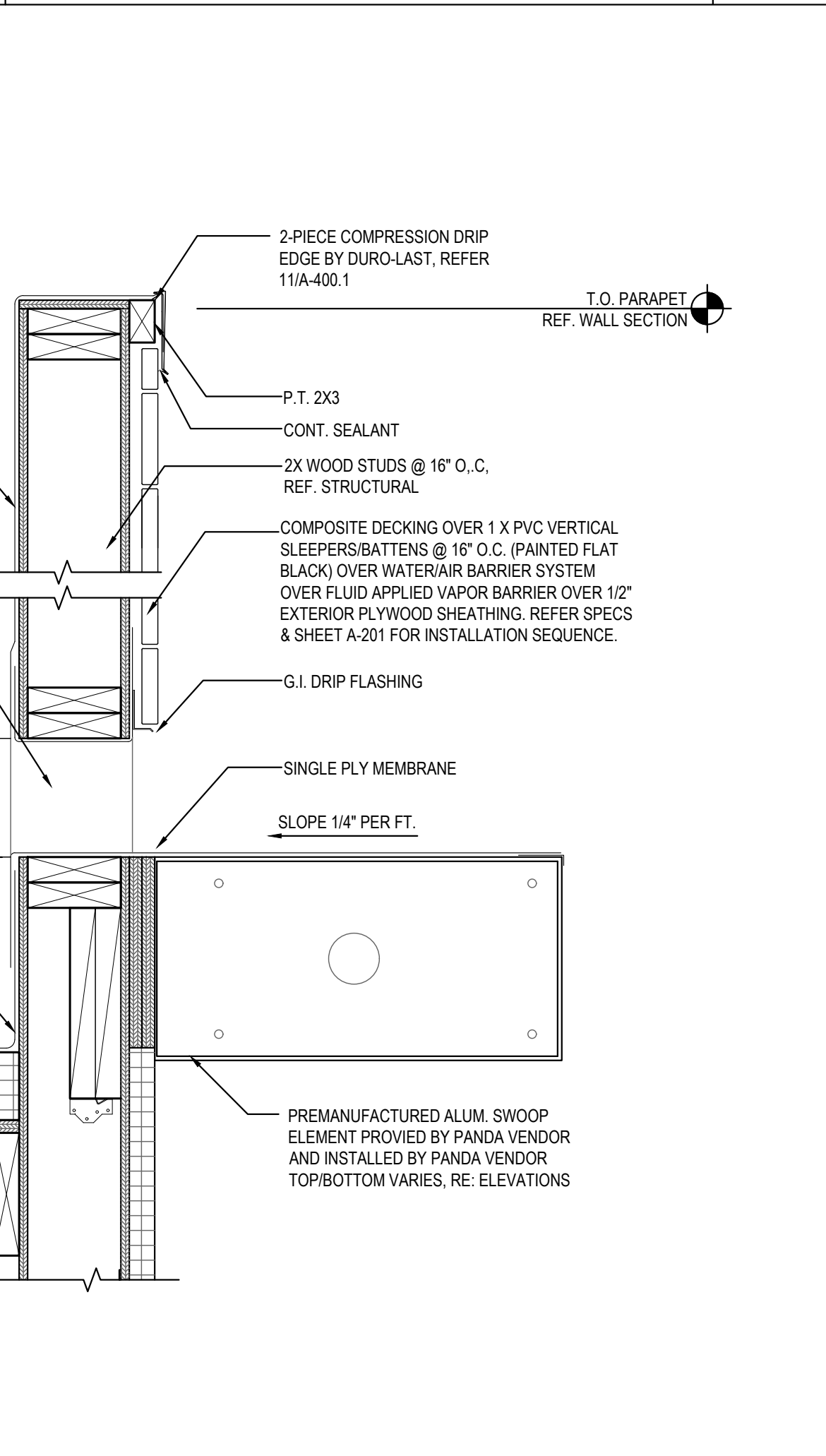
SILL DETAIL 11

Scale= 1 1/2" = 1'-0" A-400



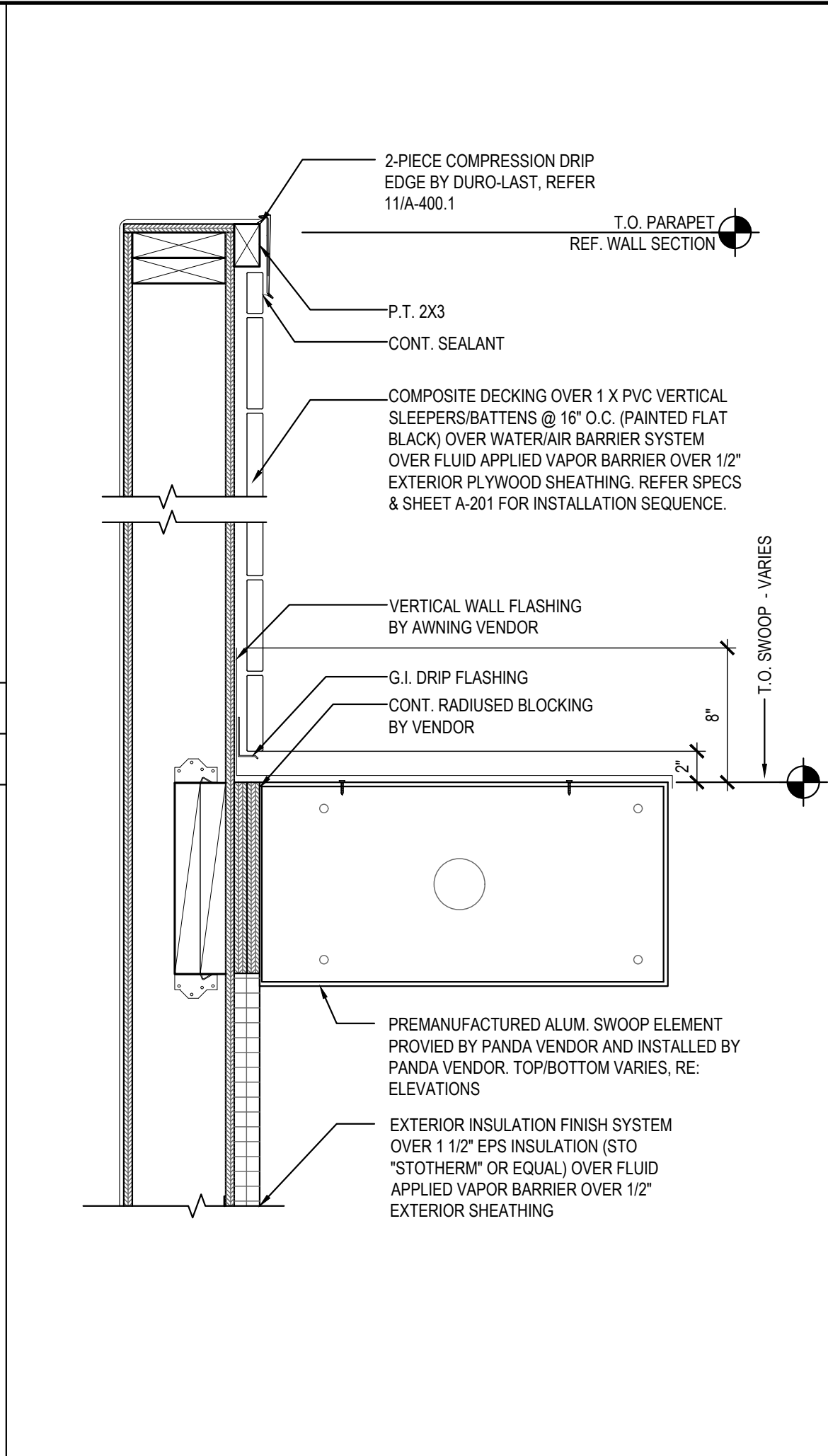
EIFS AESTHETIC REVEAL JOINT 10

Scale= 3" = 1'-0" A-400



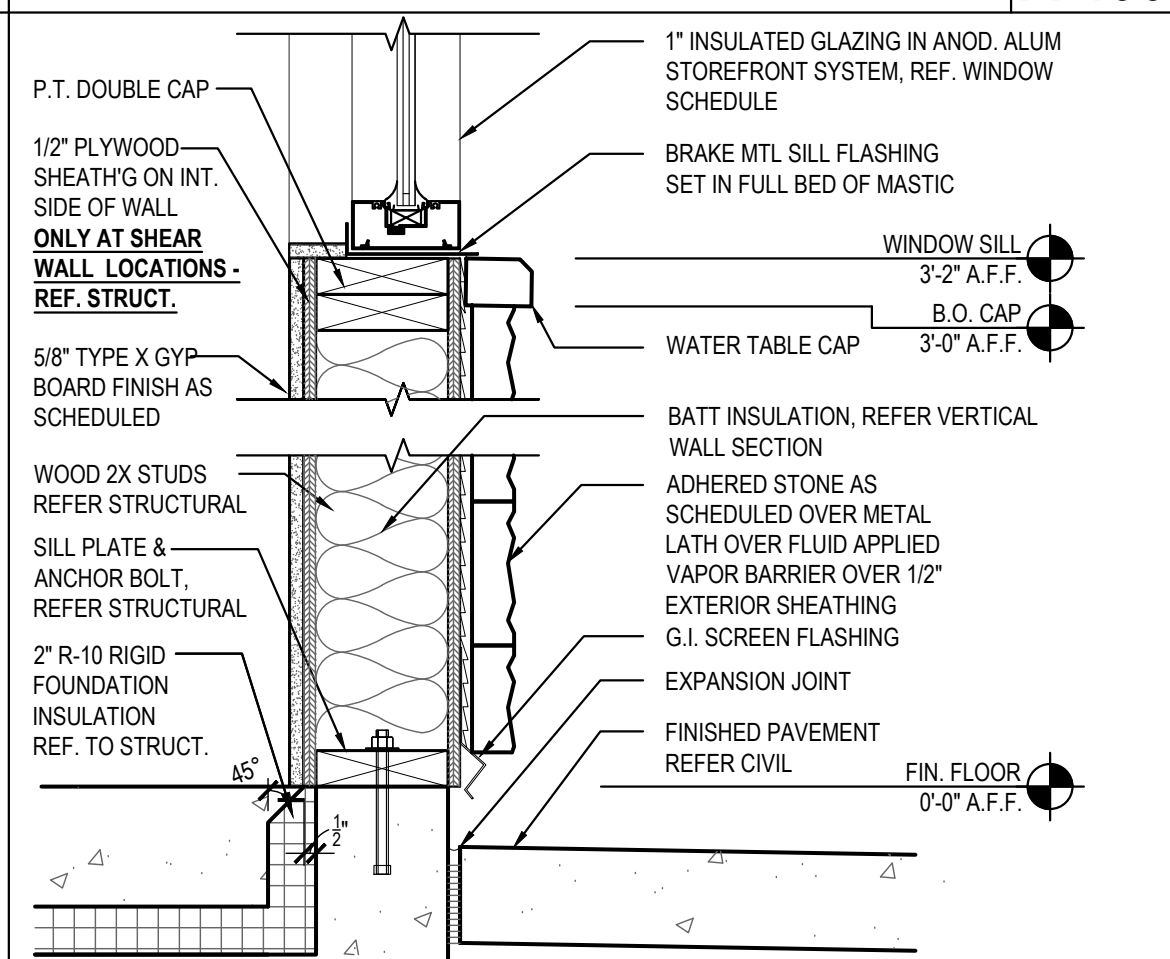
PARAPET/SWOOP DETAIL 07

Scale= 1 1/2" = 1'-0" A-400



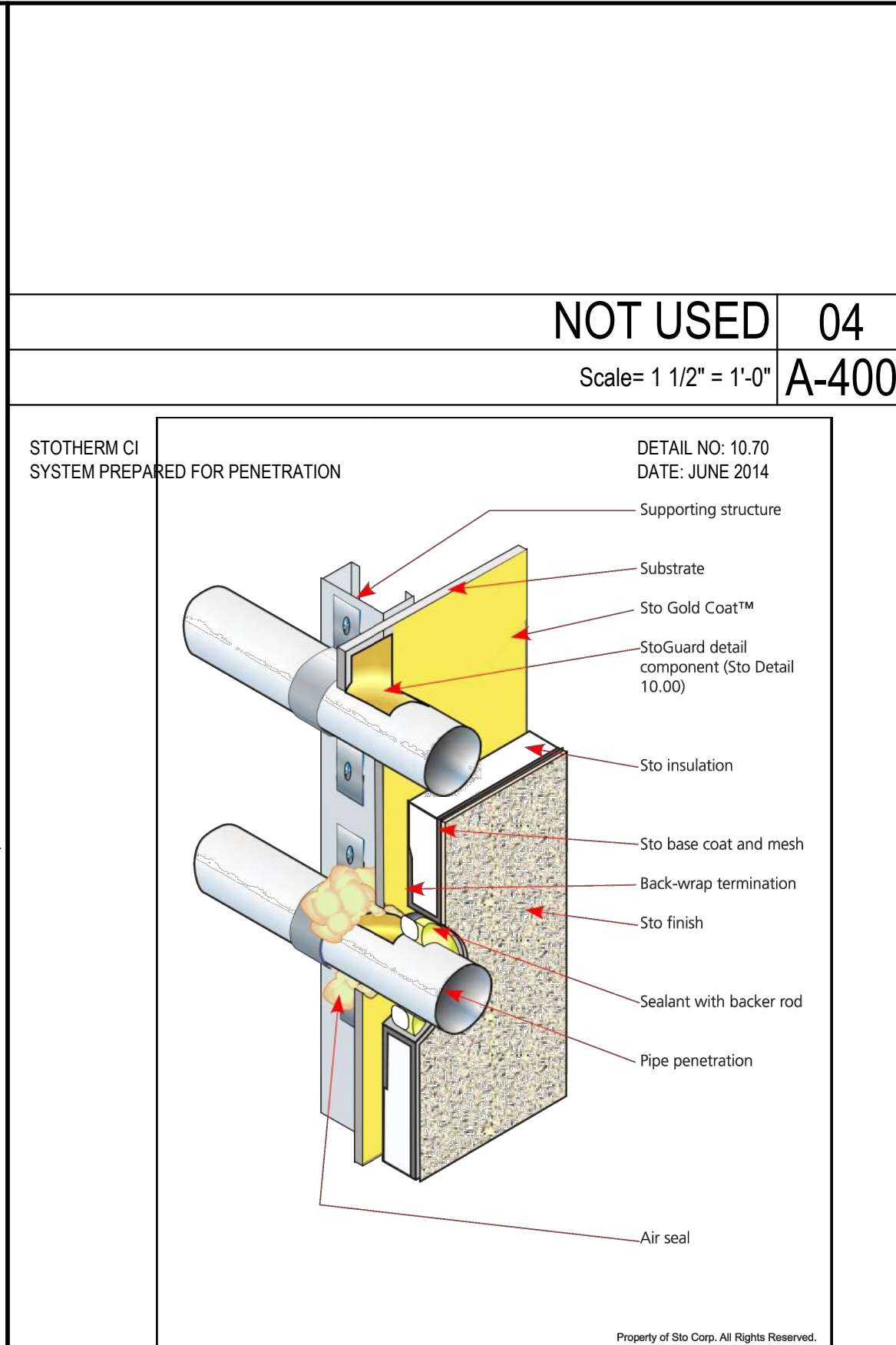
HEADER DETAIL 06

Scale= 1 1/2" = 1'-0" A-400



WINDOW SILL DETAIL 05

Scale= 1 1/2" = 1'-0" A-400



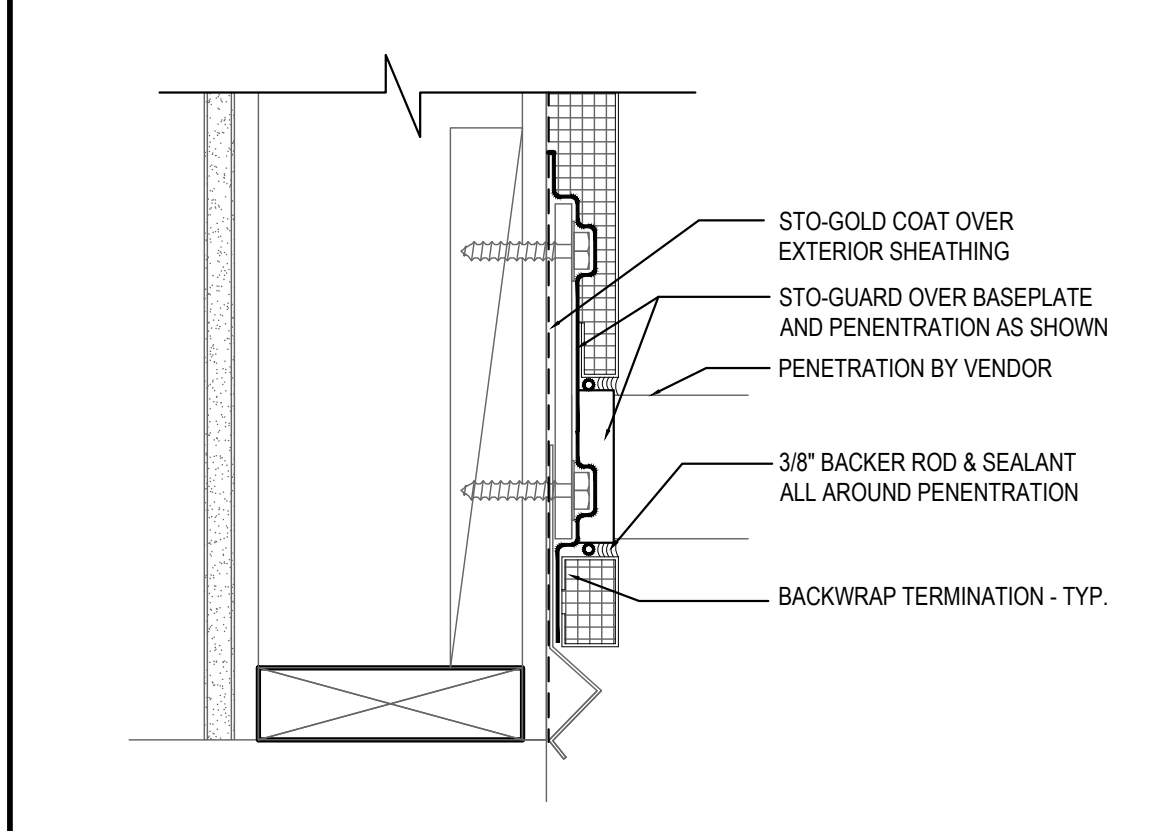
NOTES:
1.) DETAIL ASSUMES PIPE IS INSTALLED PRIOR TO THE EIFS OR THAT ITS LOCATION HAS BEEN IDENTIFIED.

2.) PREPARE AN OPENING IN THE EIFS WITH A JOINT OF 1/2" (13 MM) AROUND THE PENETRATION AND PROVIDE SEALANT WITH A CLOSED CELL BACKER ROD. PROVIDE AIR SEAL AROUND THE INTERIOR SIDE OF THE PENETRATION TO REDUCE THE PRESSURE DIFFERENCE ACROSS THE OUTSIDE SEALANT.

3.) PROVIDE STOGUARD TRANSITION MEMBRANE IN LIEU OF ST GOLD FILL AT PENETRATION WHERE JOINT BETWEEN SHEATHING AND PENETRATING ELEMENT EXCEEDS 1/8" (3MM). SEE STO DETAIL 20.52 FOR DETAILS OF STOGUARD TRANSITION MEMBRANE AT PIPE PENETRATION.

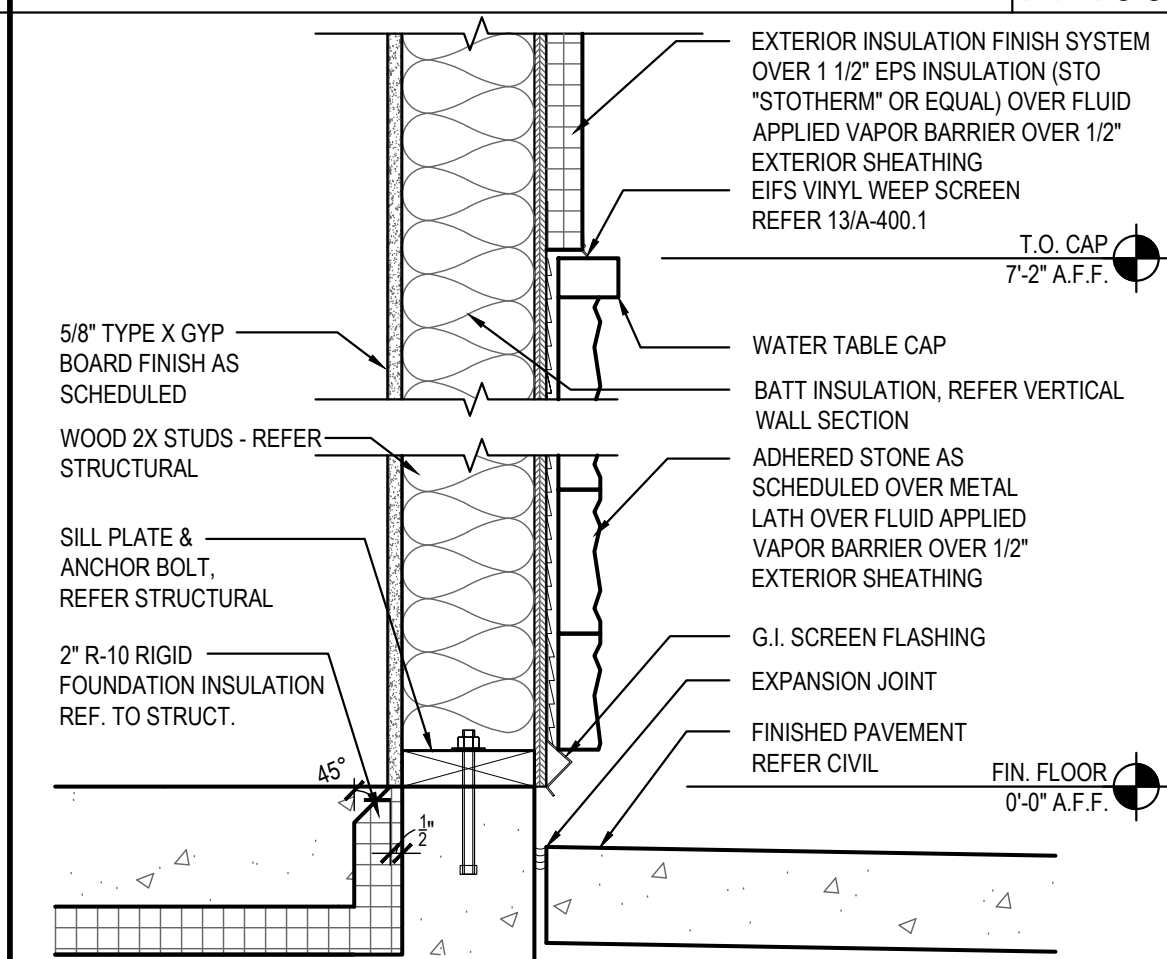
IMPORTANT:
COMPONENTS NOT IDENTIFIED AS STO ARE FURNISHED BY OTHER MANUFACTURERS AND ARE NOT NECESSARILY INSTALLED BY TRADES WHO INSTALL THE STO PRODUCTS. REFER TO PROJECT SPECIFIC CONTRACT DOCUMENTS

STO CORP. DISCLAIMS ALL WARRANTIES EXPRESSED OR IMPLIED EXCEPT FOR EXPLICITLY WRITTEN WARRANTIES ISSUED TO AND ACCEPTED BY BUILDING OWNERS IN ACCORDANCE WITH STO'S WARRANTY PROGRAM WHICH ARE SUBJECT TO CHANGE FROM TIME TO TIME. FOR THE FULLEST, MOST CURRENT INFORMATION ON PROPER APPLICATION, CLEANUP, MIXING AND OTHER SPECIFICATIONS AND WARRANTIES, CAUTIONS AND DISCLAIMERS, PLEASE REFER TO THE STO CORP. WEBSITE, WWW.STOCORP.COM



PENETRATION DETAIL 02

Scale= 3" = 1'-0" A-400



SILL DETAIL 01

Scale= 1 1/2" = 1'-0" A-400



PANDA EXPRESS, INC.
1683 Walnut Grove Ave.
Rosemead, California 91770
Telephone: 626.799.9898
Facsimile: 626.372.8288

All ideas, designs, arrangement and plans indicated or represented by this drawing are the property of Panda Express Inc. and were created for use on this specific project. None of these ideas, designs, arrangements or plans may be used by or disclosed to any person, firm, or corporation without the written permission of Panda Express Inc.

REVISIONS:

OWNER REVISIONS 01-30-23

ISSUE DATE:

ISSUE FOR PERMIT 10-20-22

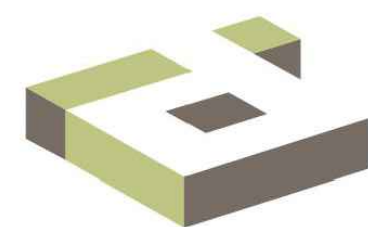
ISSUE FOR BID 01-30-23

DRAWN BY: AE/SS

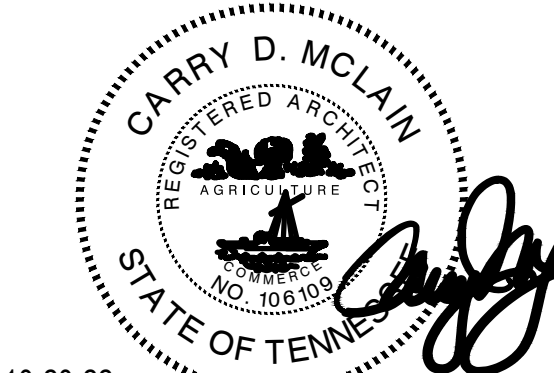
PANDA PROJECT #: D23503

PANDA STORE #: -

ARCH PROJECT #: 261-443



idGROUP



10-20-22

PANDA EXPRESS

PANDA HOME 2600
NORTH RIVERSIDE DR & 2ND ST.
CLARKSVILLE, TN 37040

A-400

ARCHITECTURAL
DETAILS

PANDA HOME 2600 R4

ISSUE FOR BID 01-30-2023

ISSUE FOR BID 01-30-2023